

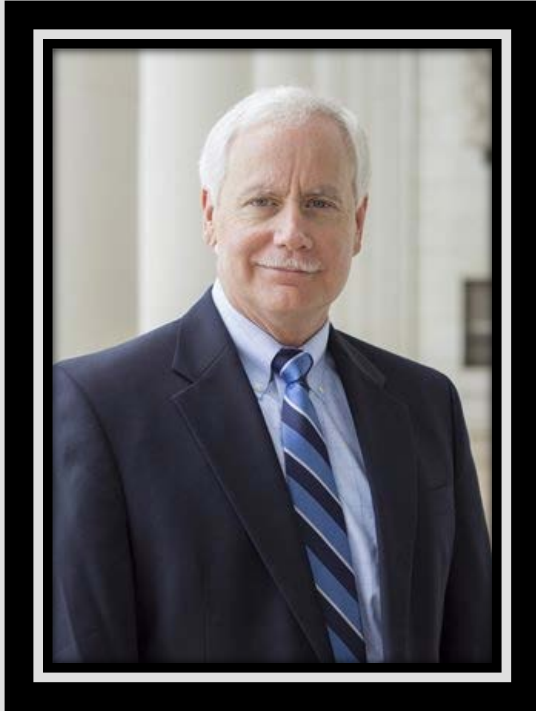
Office of Graduate and Professional Studies Overview



Dr. Mark Zoran

Acting Associate Provost for Graduate and Professional Studies

Graduate Advisor Workshop
1 August 2017



Dr. Mark Zoran

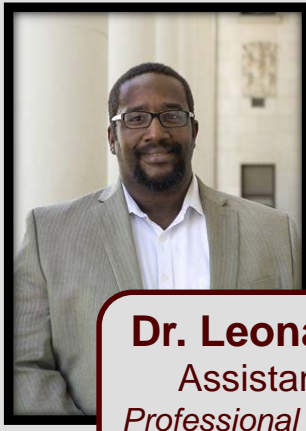
*Acting Associate Provost
for Graduate and
Professional Studies*

*Supports and promotes the
advancement of graduate
and professional studies at
Texas A&M University*

Leadership Team



Dr. Rosana Moreira
Assistant Provost
Administration, Recruiting



Dr. Leonard Bright
Assistant Provost
Professional Development



Dr. Shannon Walton
Director
Recruiting and New Students



Rachelle Dudley
Chief of Staff & Director
*Business Admin, Budget, HR
Administrative oversight*



Rachel Krolczyk
Director
*Thesis and Dissertation
Services
Document Processing*



Yvonne Costello
Assistant to the Assoc.
Provost

OGAPS at a glance

268 Graduate Degree Programs

graduate and professional student council

brown bags graduate operations committee

information technology

committee faculty

student data systems

graduate council

communications

admissions partners

awards

workshops

assessment

CTE partners

graduate funding pools

fellowships

curricular processing

language proficiency

international student service partners



Rachelle Dudley
Chief of OGAPS Staff and
Director

http://ogaps.tamu.edu/calendars

Instructions on how to subscribe

Click headings to view the events

Description of each type of link

Office of Graduate and Professional Studies

Home About Prospective Students Incoming Students Current Students Faculty & Staff International Students

You are here: Home / Calendar Subscription

Calendar Subscription

Year-round Calendars

(includes Fall 2013, Spring 2014, and Summer 2014)

Full Calendar:
[RSS Feed](#) | [Download .ics File](#) | [Add to Calendar](#)

Master's Non-Thesis Option Dates & Deadlines:
[RSS Feed](#) | [Download .ics File](#) | [Add to Calendar](#) | [PDF Document](#)

Master's Thesis Option Dates & Deadlines:
[RSS Feed](#) | [Download .ics File](#) | [Add to Calendar](#) | [PDF Document](#)

Doctoral Dates & Deadlines:
[RSS Feed](#) | [Download .ics File](#) | [Add to Calendar](#) | [PDF Document](#)

Spring 2014

Master's Non-Thesis Option Dates & Deadlines:
[RSS Feed](#) | [Download .ics File](#) | [Add to Calendar](#) | [PDF Document](#)

Master's Thesis Option Dates & Deadlines:
[RSS Feed](#) | [Download .ics File](#) | [Add to Calendar](#) | [PDF Document](#)

Doctoral Dates & Deadlines:
[RSS Feed](#) | [Download .ics File](#) | [Add to Calendar](#) | [PDF Document](#)

Click here for instructions on how to subscribe.

LINK DESCRIPTIONS

RSS Feed
 This option allows you to view the RSS feed page and URL that is used when adding RSS feeds to your preferred device. (Must have an application that accepts and reads RSS feeds.)

Download .ics File
 This option allows you to download the file containing the calendar events. You can then choose to either:

- Open the file on your smart device and import the events into your device's native calendar application.
- Open the file on your computer and import the events into your computer's default mail and calendar application.

Add to Calendar
 This option prompts you to add the calendar events to your computer's default mail and calendar application.

PDF Document
 This option allows you to download a PDF document listing the calendar events of the specified group.

Administrative and Programmatic Support



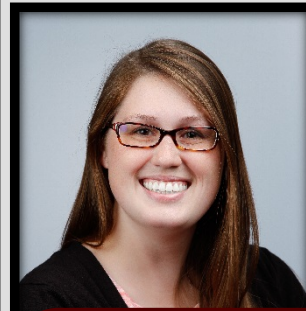
Linda Thurman
Graduate Student
Specialist IV

*Administers student fellowships,
awards and grants,
Supports R. Dudley*



LaRhesa Johnson
Senior Graduate Student
Specialist I

*Processes graduate comm. faculty
membership and 689 courses, GC
support, Processes non-resident waivers*



JaeCee Crawford
Senior IT Consultant



Haley Galloway
Graduate Student
Specialist II

Assists processing team



Laura Rueda

*Administrative Assistant
Supports L. Bright, S. Walton, R.
Krolczyk, R. Dudley*



Stacy Hernandez
Graduate Student
Specialist III

Supports Dr. R. Moreira

- **Field all incoming phone, e-mail and walk-in inquiries**
- **Manage student records**
- **Connect stakeholders with resources and information**
- **Maintain channels of communication**

Enrollment and Degrees

| Degree Count | 2006-07 | 2015-16 | percentage increase |
|-----------------|---------|---------|---------------------|
| Doctoral | 598 | 733 | 23% |
| Masters | 1,776 | 3,256 | 83% |
| Summary | 2,374 | 3,989 | 68% |

| Student Headcount | Fall 2007 | Fall 2016 | percentage increase |
|-------------------|-----------|-----------|---------------------|
| Doctoral | 4112 | 4912 | 19% |
| Masters | 4292 | 7017 | 63% |
| Summary | 8404 | 11929 | 42% |

Records Processing and Thesis and Dissertation Services



Rachel Krolczyk
Director

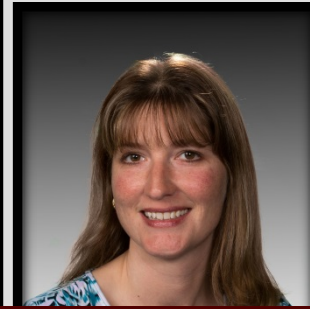
Records & Document Processing



Records Processing



Russell Ramirez
Assistant Director



Kim Widdison
Graduate Student
Specialist IV



Savannah Sanchez
Graduate Student
Specialist III



Tyler Fadal
Graduate Student
Specialist III



Debbie Starnes
Graduate Student
Specialist III



Karen Seago
Graduate Student
Specialist III
Part-Time

- *Facilitate document processing relating to progress toward graduate degrees*
- *Advise faculty, staff and graduate students on university policies and procedures*

Thesis and Dissertation Review

| Semester | Total Docs | Average # of Reviews per Doc | Total # of Reviews |
|-------------|-------------|------------------------------|--------------------|
| Fall 2015 | 415 | 1.79 | 742.85 |
| Spring 2016 | 442 | 1.83 | 808.86 |
| Summer 2016 | 469 | 1.68 | 787.92 |
| | 1326 | | 2339.63 |



Amy Motquin
Assistant Editor



Ashley Schmitt
Assistant Editor



Dan Kiniry
Editorial Assistant



Jen Rosenberg
Editorial Assistant
(Part-Time)

Jay Brakefield
Editorial Assistant

- ***Review electronic thesis, dissertation and record of study documents for adherence to university guidelines***
- ***Provide advice, preparation support and coordination for release of documents for public access***



Dr. Rosana Moreira

Assistant Provost



Dr. Shannon Walton

Director

- *Perform recruiting activities in coordination with programs*
- *Attract high-quality, diverse students*
- *Facilitate graduate student orientations*
- *Facilitate fellowship and award advising, selection, and processing*
- *Partner with faculties and student organizations to support success.*



Tasmin McDonald
Graduate Student
Specialist IV
*New Student Recruiting and
Student Success*

NSF AGEP (Alliance for Graduate Education and the Professoriate) Initiative



Isah Veronica D. Juranek
Program Coordinator

- *Facilitate alliance of Texas A&M System institutions*
- *Lead initiative to increase number of underrepresented minorities (URM) who complete doctoral degrees and continue on to the professoriate*
- *Offer activities and funding for alliance students*
- *Partners with units and organizations to support project goals*



Dr. Leonard Bright
Assistant Provost

- *Administer professional development activities and workshops*
- *Partner with colleges and non-academic units on development initiatives*
- *Oversee G.R.A.D. Aggies and its activities*
- *Coordinate and confer professional development certificates*
- *Oversees Center for the Integration of Research, Teaching and Learning (CIRTL) and its activities*
- *Coordinates 3-minute thesis competition*

Vacant

**Senior Graduate Student
Specialist I**

*Professional Development, CIRTL,
Coordinates OGAPS workshops*

Ombuds Officer



Dr. Teresa Wilcox
Ombuds Officer

- *Assist students, faculty, staff and administrators to informally solve conflicts*
- *Confidential listener, not an advocate*
- *Provide advice to those voluntarily seeking it with respect and dignity*

OGAPS and Thesis & Dissertation Services

112 Jack K. Williams Administration Building

(979) 845-3631

<http://ogaps.tamu.edu>

General Contacts

ogaps@tamu.edu - Office of Graduate and Professional Studies

ogapsprocessing@tamu.edu – Records Processing

thesis@tamu.edu - Thesis and Dissertation Services

ogaps-tatep@tamu.edu - New Teaching Assistantship Training & Assessment Program

ombuds@tamu.edu - OGAPS Ombuds services

ogaps-award-admin@tamu.edu - OGAPS Awards Administrator

ogaps-fellowship-admin@tamu.edu - OGAPS Fellowship Administrator

GradCouncilAdmin@tamu.edu - Graduate Council Administrator

grad-aggies@tamu.edu – Professional Development

ogaps-latex@tamu.edu – LaTeX Support